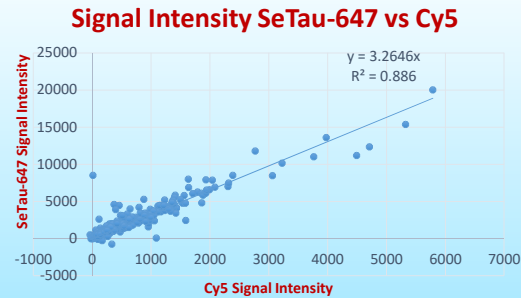


SeTau-647-labeled protein has brighter signal than Cy5-labeled protein

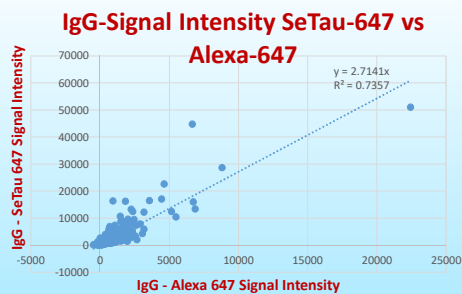
- 150 µg of depleted plasma protein
- Same concentrations of SeTau-647 or Cy5
- Same scan settings



SETA BioMedicals
Fluorescent Tools for BioMedical Applications

SeTau-647-IgG antibody has brighter signal than Alexa-647-IgG antibody

- Alexa-647-IgG was commercially labeled by Jackson
- SeTau-647-IgG was labeled in house
- Same antibody concentration
- Same PMT settings
- Same plasma sample



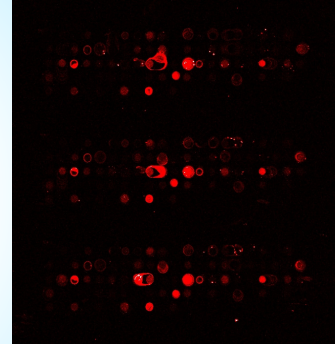
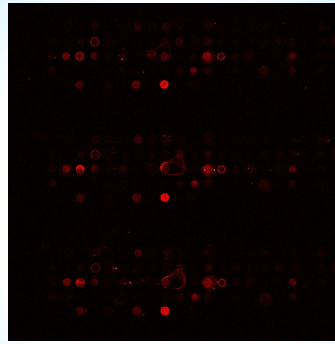
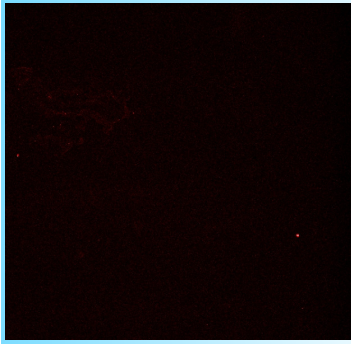
SETA BioMedicals
Fluorescent Tools for BioMedical Applications

SeTau-647-SleX antibody has brighter signal than Atto-647-SleX and Cy5-SleX antibody

Atto-647-SleX

Cy5-SleX

SeTau-647-SleX



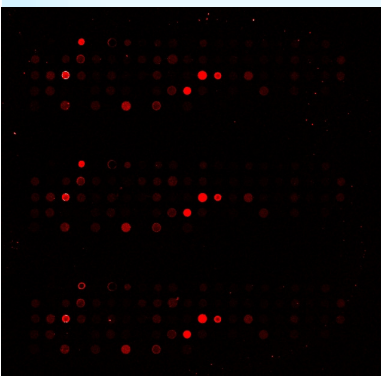
Same plasma sample
Same PMT settings

Same antibody concentration
Same dye dilution

SeTau-647-SleA antibody has brighter signal than Cy5-SleA antibody

Cy5-SleA

SeTau-647-SleA



Same plasma sample
Same PMT settings

Same antibody concentration
Same dye dilution

